

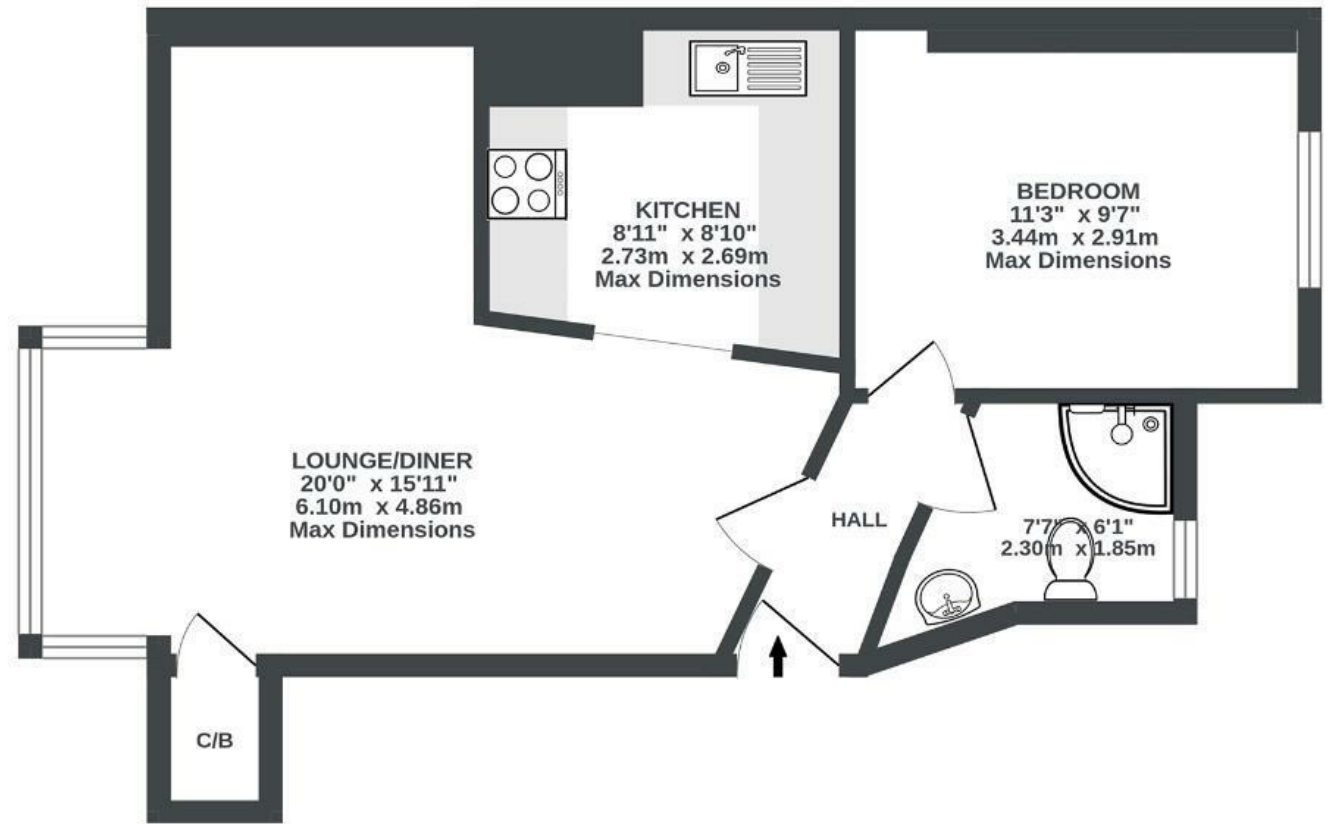
Ferrymans Court

ST PHILIPS

APPROXIMATE FLOOR AREA
41.9 SQM / 451 SQFT



FIRST FLOOR
451 sq.ft. (41.9 sq.m.) approx.



Illustrations are for reference purposes only, measurements are approximate, not to scale.

Boardwalk

Queen Street

ST. PHILIPS, BRISTOL

£

£225,000

zZz

1 Bedrooms



BS2 0JB



1 Bathrooms

"What I've loved most about this flat is the bay window in the living room, which floods the space with natural light and overlooks the communal courtyard. The central location has also been a real highlight, with everything you need just a few minutes' walk away, making everyday life incredibly easy."

